

BLACK BAY CHRONO

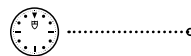
To mark five decades of its chronographs, TUDOR offered its Black Bay Chrono model in steel with a reworked case and two dial options with contrasting sub-counters in the purest tradition of the sports chronograph. Now the model comes with the option of a 3-link or 5-link bracelet, both with "T-Fi" clasp.




TUDOR



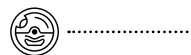
Domed matt black or opaline dial
with contrasting circular sub-counters



"Snowflake" hands
one of the hallmarks of the TUDOR
divers' watches introduced in 1969,
with Grade A Swiss Super-LumiNova®
luminescent material



**Manufacture Chronograph
Calibre MT5813**
certified by the Official Swiss
Chronometer Testing Institute (COSC),
with a silicon balance spring,
a 70-hour power reserve, a column
wheel construction and vertical clutch



**Satin-brushed and polished case
in 316L stainless steel**
41mm in diameter, with a fixed bezel
in 316L stainless steel, insert in black
anodised aluminium with tachymetric
scale



**A choice between a stainless steel
3-link "rivet-style" bracelet or
stainless steel 5-link bracelet**
both with TUDOR "T-fit" rapid
adjustment clasp



**Five-year transferable
guarantee**
with no registration or
periodic maintenance checks
required

Since the launch in 1970 of the Oysterdate model, its first chronograph, TUDOR has always produced watches that are closely tied to the world of motor sport. Since 1954, TUDOR has likewise been constantly improving its professional divers' watches.

The Black Bay Chrono model combines these traditions in a sports chronograph for purists, with contrasting sub-counters and a high-performance automatic Manufacture Calibre, with column wheel and vertical clutch.



THE SPIRIT OF ASPHALT AND SEA

Remaining faithful to the Black Bay aesthetic, the Black Bay Chrono model has made the famous "Snowflake" hands – a brand signature for divers' watches since 1969 – its own, in a version honed to ensure optimum readability on its domed dial.

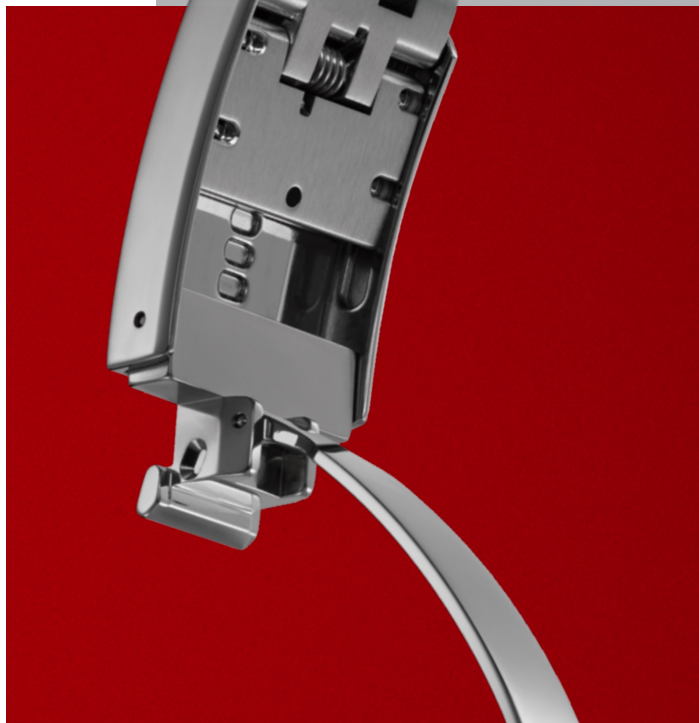
Available in two versions, matt black or opaline, the dial includes two hollowed sub-counters in contrasting colours, white opaline or matt black respectively, for optimum readability. Inspired by the first generation of TUDOR chronographs, there is a 45-minute counter and a date aperture positioned at 6 o'clock.

The recognisable characteristics of the Black Bay are preserved in a steel case with a 41-millimetre diameter refined by the ingenious cut of the lower part of the sapphire crystal and a repositioned movement.

Typical of the scrupulous attention to detail that is characteristic of the brand, the design of the stainless steel pushers has been inspired by the very first generation of TUDOR chronographs. A fixed bezel in stainless steel with a tachymetric scale insert in black anodised aluminium completes the distinguished appearance of this sporty new chronograph.



"Inspired by the first generation of TUDOR chronographs, the dial layout includes a 45-minute counter and a date aperture positioned at 6 o'clock."



3-LINK AND 5-LINK STEEL BRACELETS WITH "T-FIT" CLASP

The model is also available mounted on a 5-link stainless steel bracelet or a 3-link stainless steel "rivet style" bracelet inspired by the folding riveted bracelets made by TUDOR in the 1950s and 1960s. These were famous for having rivet heads for attaching the links, visible on the side of the bracelet. The links also had a distinct stepped construction. These two aesthetic details appear on today's model, which still integrates modern manufacturing methods with solid links.

Both bracelets feature TUDOR's "T-fit" rapid adjustment clasp. Easy to use, requiring no tools and offering five positions, this practical system allows wearers to carry out a fine, instant adjustment of the total length of the bracelet along an adjustment window of 8mm. The clasp also features ceramic ball bearings that ensure a smooth and secure closure in addition to adding a pleasing tactile element to the action of the clasp.

THE MANUFACTURE CHRONOGRAPH CALIBRE MT5813

The Manufacture Chronograph Calibre MT5813, which powers the Black Bay Chrono model, displays hour, minute, second, chronograph and date functions. It has the finish typical of TUDOR Manufacture Calibres. Its rotor in tungsten monobloc is openwork and satin-brushed with sand-blasted details, and its bridges and mainplate have alternate sand-blasted and polished surfaces with laser decorations.

Boasting a 70-hour power reserve and a silicon balance spring, the Manufacture MT5813 Chronograph Calibre is certified by the Official Swiss Chronometer Testing Institute (COSC), with its performance exceeding the standards set by this independent institute. In fact, where COSC allows an average variation in the daily rate of an uncased movement of between -4/+6 seconds' variation per day,

TUDOR applies a -2/+4 seconds' variation standard on the completely assembled watch. A high-performance movement, it was crafted in the purest watchmaking tradition, with a column wheel mechanism and vertical clutch. In keeping with the TUDOR philosophy of quality, it presents extraordinary robustness and reliability, guaranteed by the array of extreme tests applied to all TUDOR products.

Derived from the Chronograph Manufacture Calibre Bo1 from Breitling, with a high-precision regulating organ developed by TUDOR and exclusive finishes, this movement is the result of a lasting collaboration between the two brands, which have chosen to pool their expertise in the design and production of certain mechanical movements.



"A high-performance movement, it was crafted in the purest watchmaking tradition, with a column wheel mechanism and vertical clutch."

THE ESSENCE OF BLACK BAY

Like other models in the Black Bay range, the Black Bay Chrono has adopted TUDOR's characteristic angular hands known as "Snowflake" that first appeared in the brand's 1969 catalogue. The result of a subtle blend of traditional aesthetics and contemporary watchmaking, the Black Bay line is far from simply being an identical rerelease of a classic. Resolutely anchored in the present, it brings together almost seven decades of TUDOR divers' watches. Whilst it is neo-vintage in conception, its manufacturing techniques and its robustness, reliability, durability and precision as well as the quality of its finish are above modern industry standards.

50 YEARS OF TUDOR CHRONOGRAPHS

In 1970, TUDOR introduced its first chronograph, the Oysterdate. A watch that was both robust and functional, its unique design was characterised by its bright colours, its pentagonal hour markers shaped like a baseball home plate, its 45-minute counter and its date function at 6 o'clock. Immediately adopted by the world of motorsport, it paved the way for more than 50 years of technical chronographs that TUDOR has never stopped improving.





THE TUDOR MANUFACTURE

Every TUDOR watch is assembled and fully tested to TUDOR's superior standards at the new TUDOR Manufacture located in Le Locle, Switzerland.

This new state-of-the-art facility, bringing together the know-how of watchmakers with the best in production management and automated testing systems, was completed in 2021 after three years of construction.

All decked out in TUDOR red, the Manufacture spans over four levels totalling 5,500 square meters and is physically and visually connected to the neighbouring Kenissi Manufacture, the TUDOR movement production facility founded in 2016. With Kenissi and a network of TUDOR-owned affiliates, the brand has been able to integrate the development and production of high-performance mechanical calibres. As a consequence, TUDOR now fully masters the manufacturing of strategic components and can guarantee their quality.

THE TUDOR GUARANTEE

Since its creation by Hans Wilsdorf in 1926, and in line with his vision of an ideal watchmaking product, TUDOR has never stopped producing the most robust, durable, reliable and precise watches in existence today. Bolstered by this experience, and confident in the knowledge of the superior quality of its watches, TUDOR offers a five-year guarantee on all its products.

This guarantee does not require the watch to be registered or any periodic maintenance checks to be performed and is transferable should the watch change ownership during coverage. TUDOR also recommends that its watches should be serviced approximately every 10 years depending on the model and the extent of its use on a day-to-day basis.

TUDOR IS "BORN TO DARE"

In 2017, TUDOR launched a new campaign with the "Born To Dare" signature. It reflects both the history of the brand and what it stands for today. It tells the adventures of individuals who have achieved the extraordinary on land, on ice, in the air and underwater, with a TUDOR watch on their wrists. It also refers to the vision of Hans Wilsdorf, the founder of TUDOR, who manufactured TUDOR watches to withstand the most extreme conditions, watches made for the most daring lifestyles.

It is testimony to TUDOR's singular approach to watchmaking, which has made it what it is today. At the cutting edge of the watchmaking industry, its innovations are now essential benchmarks. The TUDOR "Born To Dare" spirit is supported throughout the world by first class ambassadors, whose achievements result directly from a daring approach to life.

ABOUT TUDOR

TUDOR is an award-winning Swiss-made watch brand, offering watches with refined aesthetics, proven reliability and unique value for money. The origins of TUDOR date back to 1926, when "The Tudor" was first registered as a brand on behalf of the founder of Rolex, Hans Wilsdorf. He created the Montres TUDOR SA Company in 1946 to offer watches with the quality and dependability of a Rolex, at a more affordable price point.

Because of their robustness and affordability, throughout their history TUDOR watches have been chosen by the boldest adventurers on land, underwater and on ice. Today, the TUDOR collection includes emblematic models such as Black Bay, Pelagos, 1926 and TUDOR Royal. Since 2015, TUDOR has also offered mechanical Manufacture Calibres with multiple functions and superior performance.



Swiss price
(VAT incl.)
CHF 5,450.–

Swiss price
(VAT incl.)
CHF 5,350.–

BLACK BAY CHRONO

REFERENCE 79360N

CASE

41mm 316L stainless steel case with polished and satin-brushed finishes

BEZEL

Fixed 316L stainless steel bezel with matt black anodised aluminium insert and tachymetric scale with silver markings

WINDING CROWN

- ▶ 316L stainless steel screw-down winding crown with the TUDOR rose in relief
- ▶ 316L stainless steel screw-down pushers at 2 o'clock and 4 o'clock

DIAL

- ▶ Black with silver counters, or opaline with black counters, domed
- ▶ Date at 6 o'clock

CRYSTAL

Domed sapphire crystal

WATERPROOFNESS

Waterproof to 200m (660 ft)

BRACELET

316L stainless steel 5-link bracelet or 3-link "rivet-style" bracelet with polished and satin-brushed finishes, with TUDOR "T-fit" rapid adjustment clasp

MOVEMENT

- ▶ Manufacture Calibre MT5813 with chronograph function
- ▶ Self-winding mechanical chronograph movement with bidirectional rotor system

POWER RESERVE

Approximately 70 hours

PRECISION

Swiss chronometer officially certified by COSC (Official Swiss Chronometer Testing Institute)

FUNCTIONS

- ▶ Hours and minutes hands at the centre
- ▶ Chronograph seconds at the centre
- ▶ Chronograph 45-minute counter at 3 o'clock
- ▶ Small seconds at 9 o'clock
- ▶ Instantaneous date at 6 o'clock with rapid adjustment without non-correction range
- ▶ Stop-seconds for precise time setting

OSCILLATOR

- ▶ Variable inertia balance, micro-adjustment by screw
- ▶ Non-magnetic silicon balance spring
- ▶ Frequency: 28,800 beats/hour (4 Hz)

TOTAL DIAMETER

30.4mm

THICKNESS

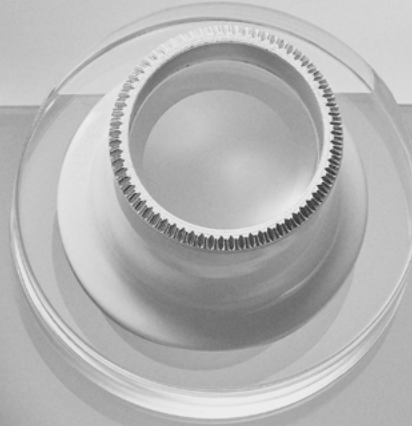
7.23mm

JEWELS

41 jewels



tudor.watch/Pressroom




TUDOR